

Installation Wizard

User's Manual

The screenshot shows the 'Network Camera / Video Server Installation Wizard' window. The title bar reads 'Installation Wizard'. The main title is 'Network Camera / Video Server Installation Wizard'. On the left side, there are buttons for 'Setup', 'Upgrade', 'Reset to default', 'Exit', and 'About'. The main area contains a table with the following data:

Serial Number	IP Address (domain name)	Assigned	Model	Auto IP
<input type="checkbox"/> 00-02-D1-24-00-01	192.168.0.213	Yes	IP3132	Yes
<input type="checkbox"/> 00-02-D1-00-00-36	192.168.0.211	Yes	IP3132	Yes
<input type="checkbox"/> 00-02-D1-24-00-07	192.168.0.226	Yes	IP3132	Yes
<input type="checkbox"/> 00-02-D1-00-21-4D	192.168.0.99	Yes	PT31x3	Yes
<input type="checkbox"/> 00-02-D1-00-28-3C	192.168.0.212	Yes	IP31x2	Yes
<input type="checkbox"/> 00-02-D1-28-00-2F	192.168.0.244	Yes	IP3133	Yes
<input type="checkbox"/> 00-02-D1-00-00-52	192.168.0.215	Yes	IP3133	Yes
<input type="checkbox"/> 00-02-D1-00-00-51	192.168.0.236	Yes	PT31x2	Yes

At the bottom of the window, there are buttons for 'Search', 'Add', 'Remove', 'Uncheck All', and 'Link to selected device (S)'.

Contents

Chapter 1	Installation.....	1-2
1.1	Software Installation	1-2
Chapter 2	Using Installation Wizard	2-6
2.1	User Interface.....	2-6
2.1.1	Action buttons	2-7
2.1.2	Function buttons.....	2-8
2.2	Setup	2-8
2.2.1	System Setting	2-9
2.2.2	Network Setting	2-11
2.2.3	Wireless Setting	2-11
2.2.4	Apply to selected device	2-14
2.3	Upgrade.....	2-15
2.3.1	Device Information	2-15
2.3.2	Package Information	2-17
2.3.3	File Selection	2-17
2.3.4	Upgrade.....	2-17

Chapter 1 Installation

1.1 Software Installation

The following are steps for the software installation.

STEP 1: Put the Installation disk into the CD-ROM drive, and the installation should start automatically. If the installation does not start, click on “Start” on the lower left corner of your screen, open “My Computer” and double click on the CD-ROM icon. The Installation Wizard Installation Window will appear as Figure 1-1 in below.

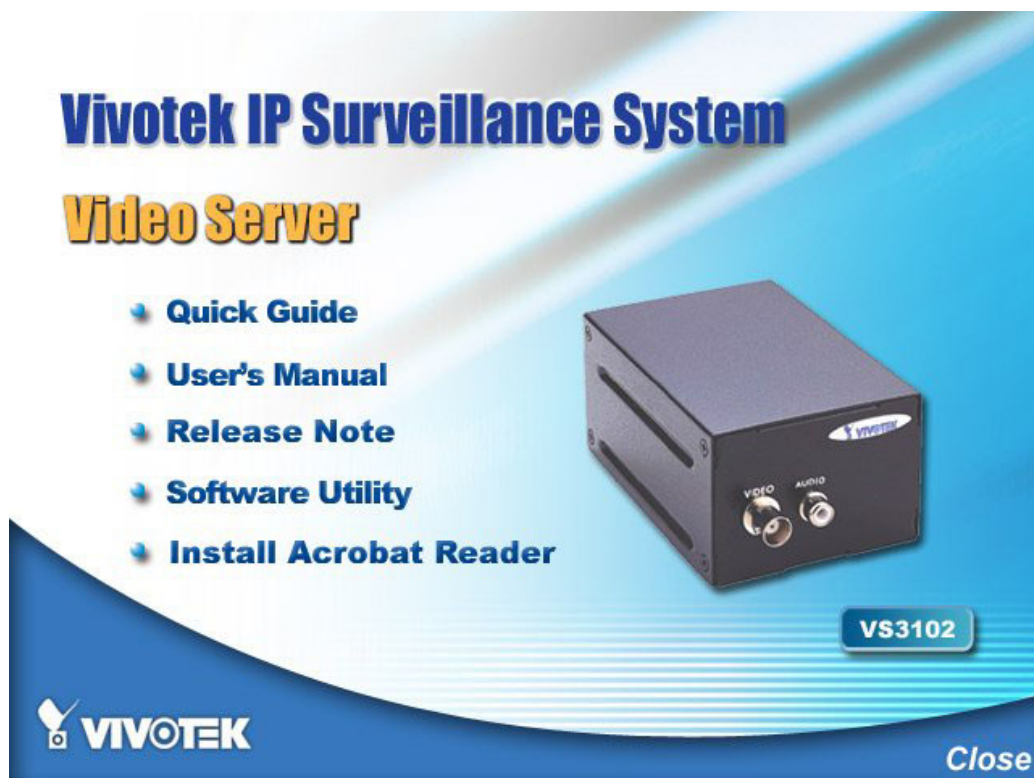


Figure 1-1 Installation Wizard Installation Window

(The figure may be changed for different models)

STEP 2: There are links on this page, including Quick Guide, User’s Manual, Release Note, and Software Utility. Click on “Software Utility” to enter software Utility page as shown in Figure 1-2.

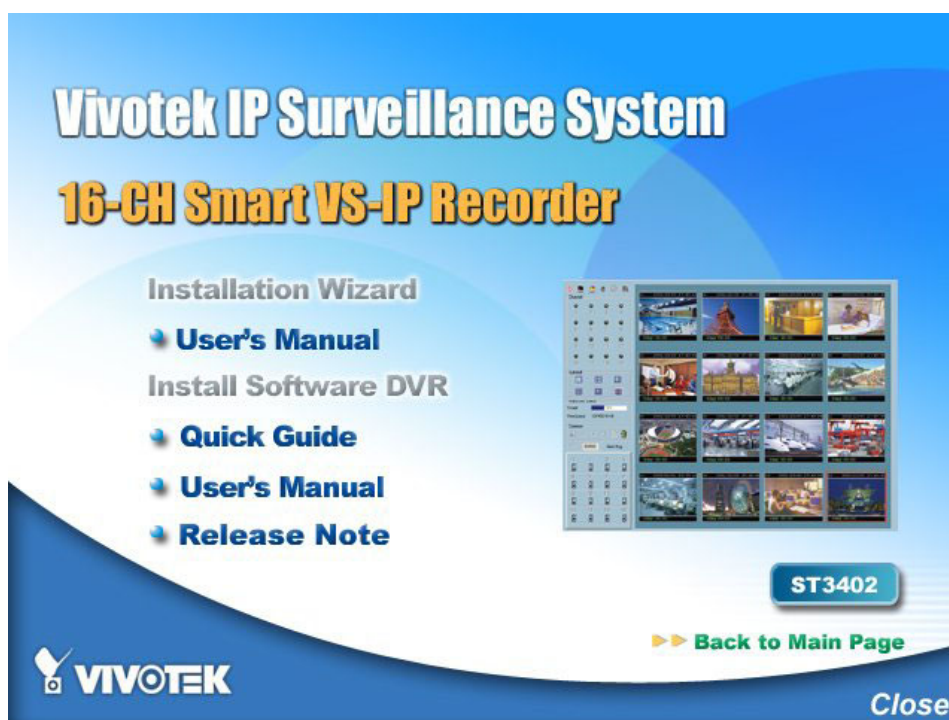


Figure 1-2 Software Installation window
 (The figure may be changed for different models)

STEP 3: There are links on this page, including Quick Guide, User's Manual, Release Note, Installation Wizard and Install Software Utility. Click on "Installation Wizard" to launch the setup program. The InstallShield will show as Figure 1-3 .

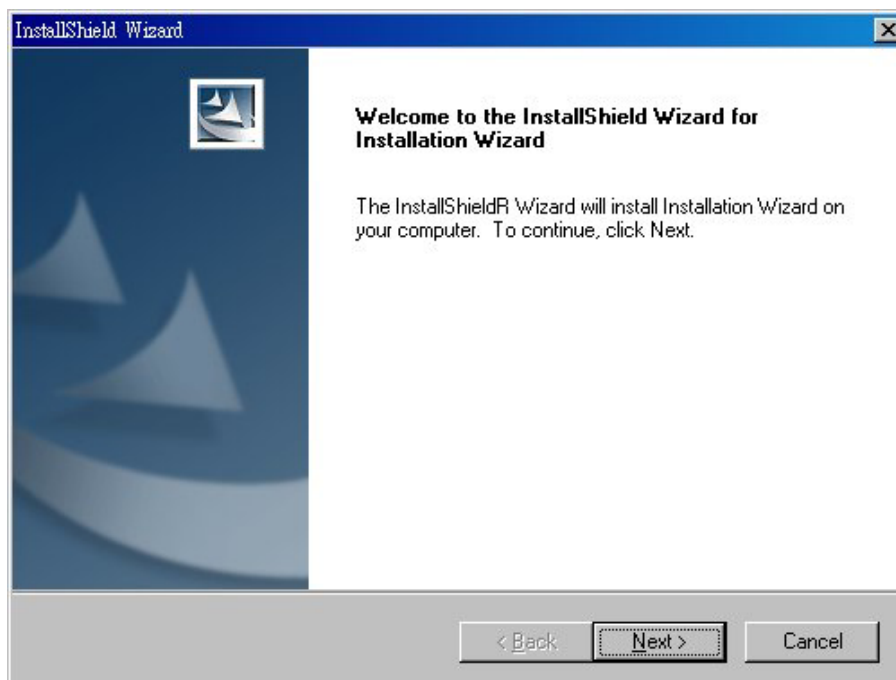


Figure 1-3 Welcome page for the InstallWizard

STEP 4: Select the installation directory for this application software and click on “Next”, as shown in Figure 1-4. You can also change the installation directory from the default directory by clicking on “Browse...”

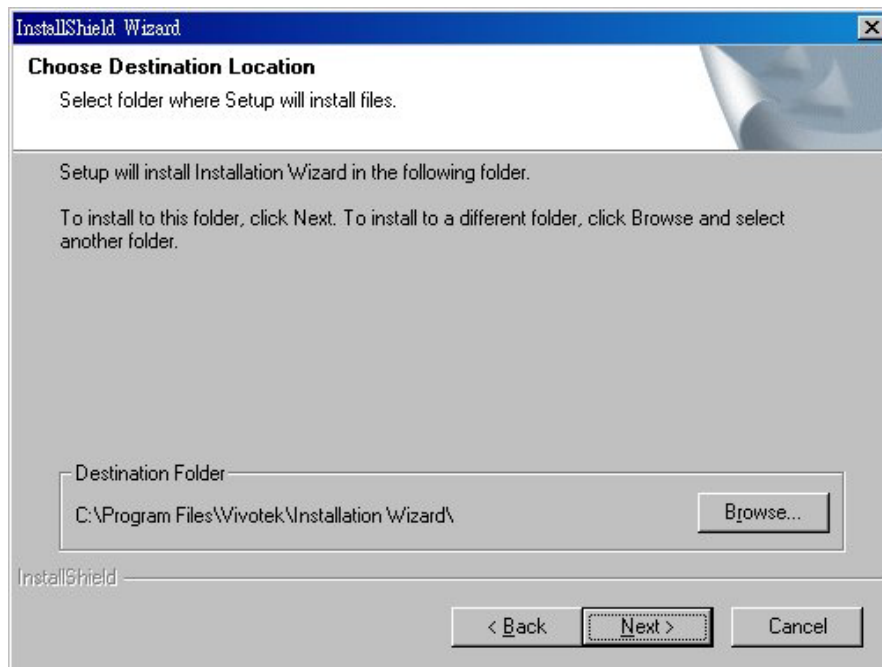


Figure 1-4 Destination Location for Installation

STEP 5: Select a program folder to install the application software into and then click on “Next”, as shown in Figure 1-5.

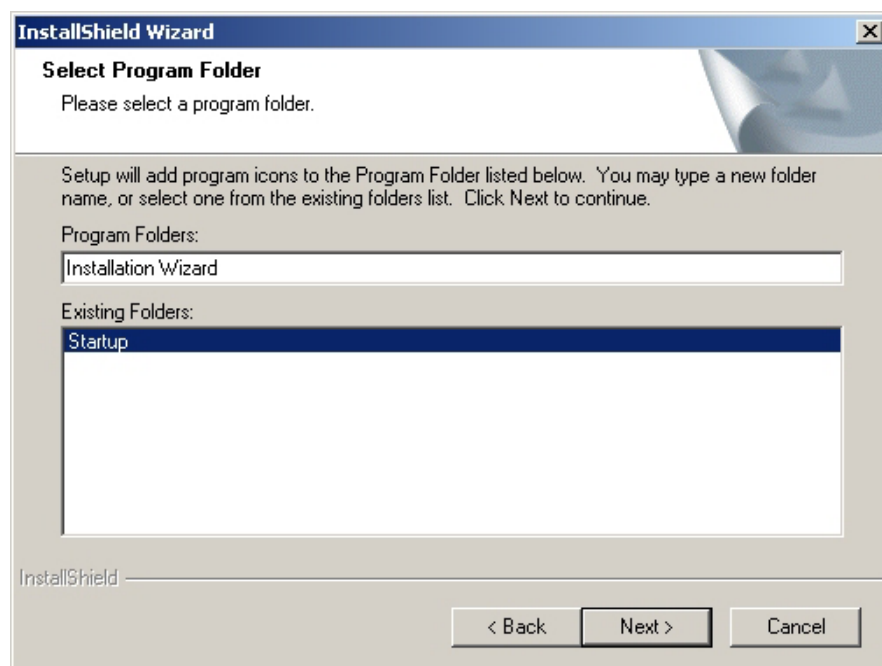


Figure 1-5 Select Program Folder

STEP 6: Click on “Finish”, as shown in Figure 1-6, to finish installation. This completes the installation.

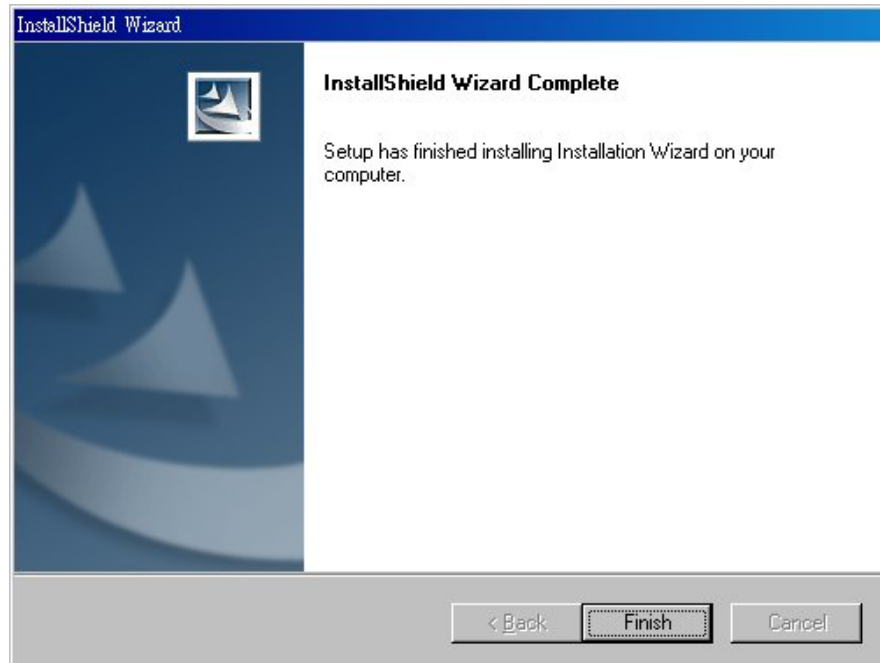


Figure 1-6 Finish the Installation

Chapter 2 Using Installation Wizard

2.1 User Interface

Once you run the Installation Wizard, you will see the user interface shown in Figure 2-1. You can click on the device list to select a device. The three buttons (Setup, Upgrade, and Reset to default) won't be enabled until you select at least one device.

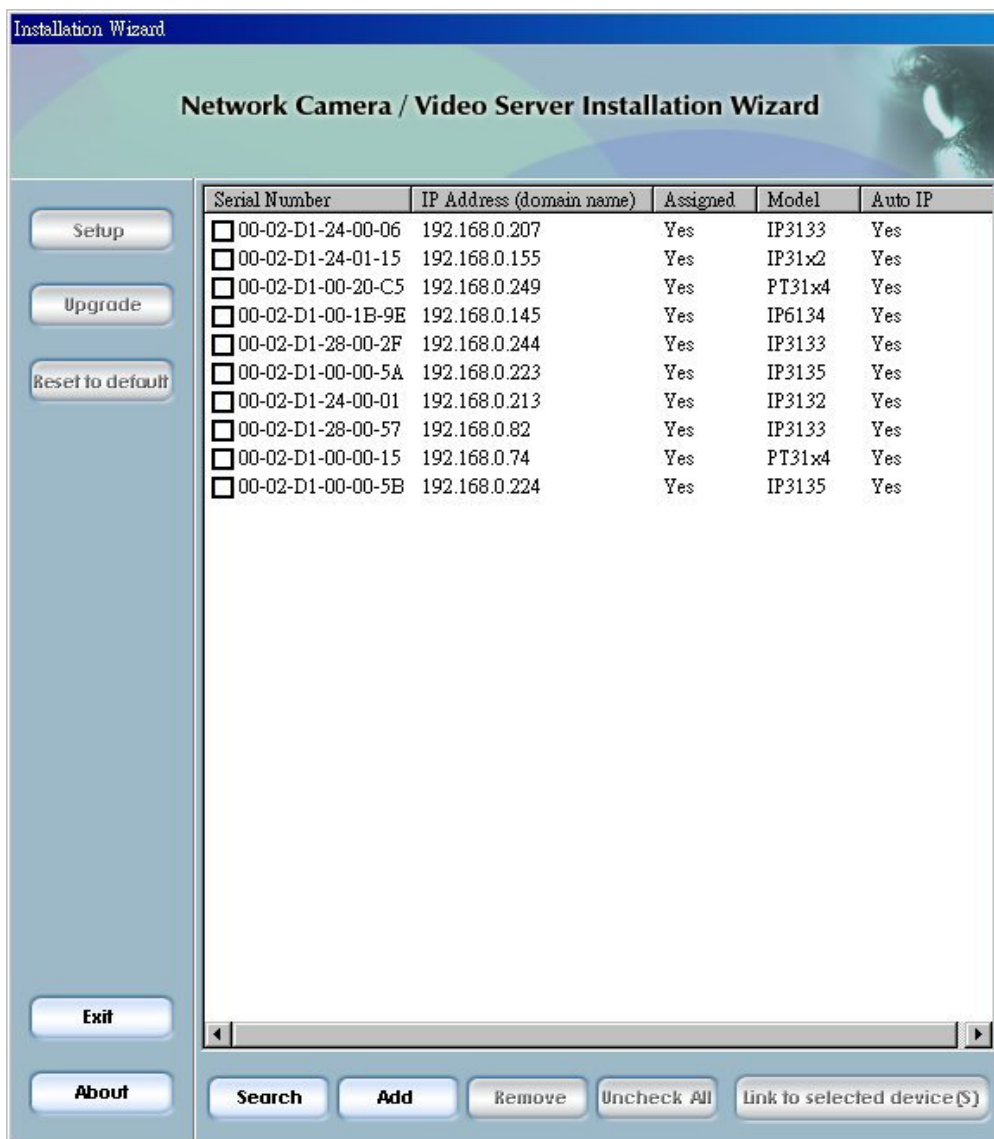


Figure 2-1 User interface of InstallWizard

Installation wizard allows you to setup or upgrade multiple devices (of the same model) at the same time. If you selected different models, then the buttons will be disabled. There are five buttons on the bottom of the main page as shown in Figure 2-2, and five buttons on the left panel of the main page as shown in Figure 2-3.



Figure 2-2 Action buttons

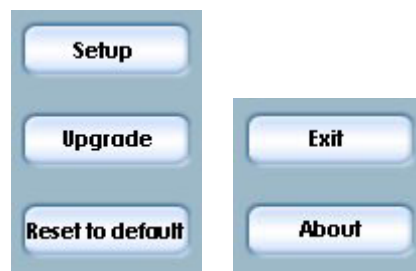



Figure 2-3 Function buttons

2.1.1 Action buttons

 Click on this button to clean up the device list and search all devices on the within the same subnet again. It will take about 5 seconds.





 To setup or upgrade the devices which can not be found by. Installation Wizard, please click on this button to add them manually. Click on this button will popup a dialog as shown in Figure 2-4. You can input the IP address and click on Ok to add the device into the device list.




Figure 2-4 Add device dialog


 Click on this button will remove all the selected devices from the device list. The devices that you remove might be show up again if you click the search button or add them into list manually.

 While you selected several devices, this button allows you to uncheck all the selected devices by one click instead of uncheck the selected devices one by one.

 Click on this button will open the web browsers to link to all the selected devices. (One browser per device)


2.1.2 Function buttons

 Click on this button to modify the settings of the selected devices. For more detail, please refer to 2.2 Setup.

 Click on this button to upgrade the firmware of the selected devices. For more detail, please refer to 2.3 Upgrade.

 Click on this button to reset of the selected devices to default settings.

 Click on this button to close the Installation Wizard.

 Click on this button to get infomation about the Installation Wizard.

2.2 Setup

When you select one or multiple devices (of the same model), the “**Setup**” button will be enabled. Click on it to modify the settings of the selected device(s). After clicking on the “**Setup**” button, Installation Wizard will try to connect to the selected device(s). If the authentication is failed, it will popup a dialog (see Figure 2-5) to ask for correct password and http port number.

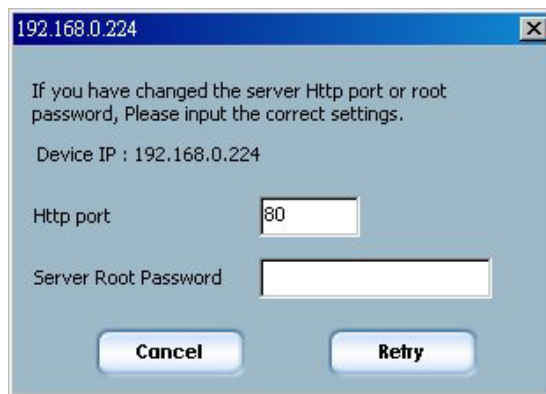





Figure 2-5 Authentication

2.2.1 System Setting

After connected to the selected device(s), it will switch to system setting page as shown in Figure 2-6.

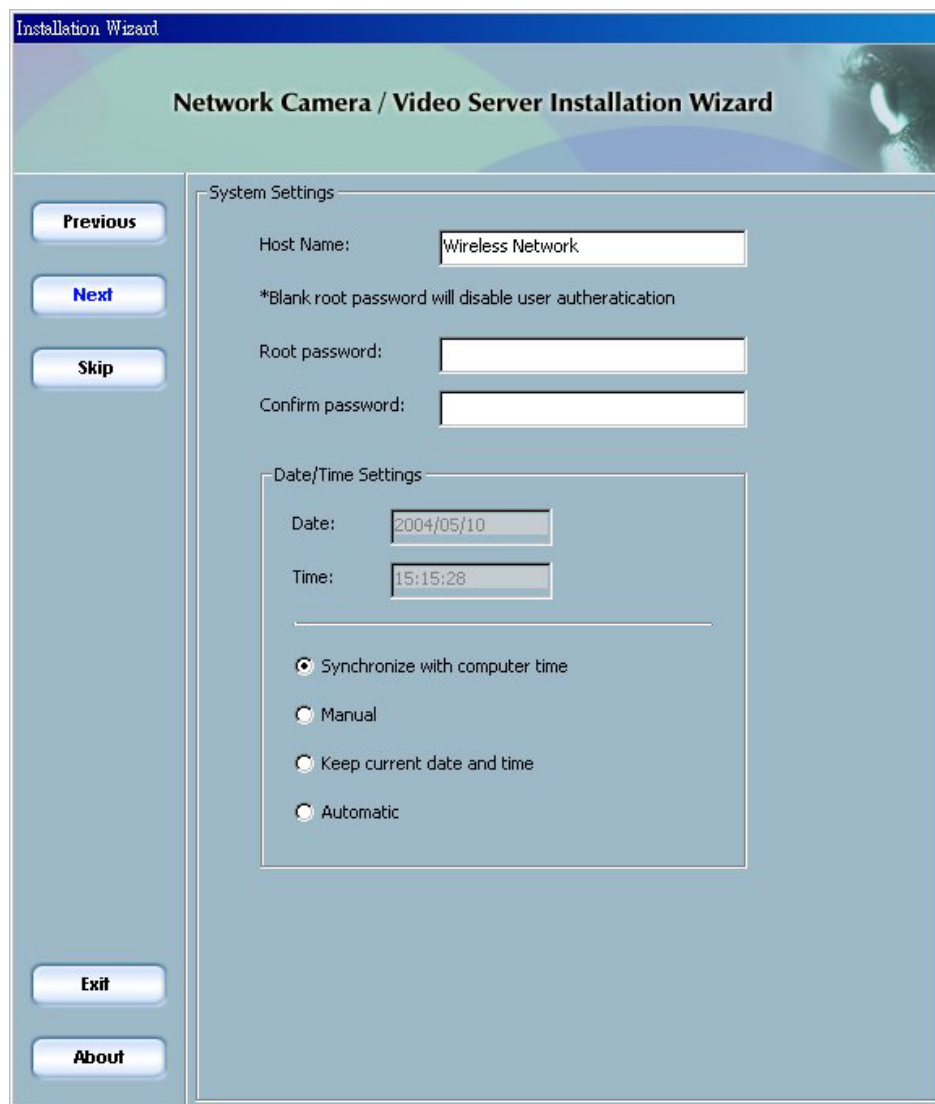
-  Click on this button to back to the previous page or main page
-  Click on this button to keep the settings and go to the next page.
-  Click on this button to discard the settings of the current page and go to the next page.

2.2.1.1 Change Host Name

The “**host name**” is used for the homepage title of main page and is displayed as the title over the video window on the main page. The maximum string length is 40 characters or 20 characters in double-byte-character-systems like Chinese or Japanese.

2.2.1.2 Change root password

To change the administrator's password, type the new password in both root password and confirm password text boxes identically. What is typed will be displayed as asterisks for security purposes. The maximum password is 14 characters.



The screenshot shows the 'System Settings' section of the 'Network Camera / Video Server Installation Wizard'. The window title is 'Installation Wizard'. The main title is 'Network Camera / Video Server Installation Wizard'. On the left side, there are four buttons: 'Previous', 'Next', 'Skip', and 'Exit'. At the bottom left, there are two buttons: 'Exit' and 'About'. The 'System Settings' section contains the following fields and options:

- Host Name:
- *Blank root password will disable user authentication
- Root password:
- Confirm password:
- Date/Time Settings:
 - Date:
 - Time:
 - Synchronize with computer time
 - Manual
 - Keep current date and time
 - Automatic

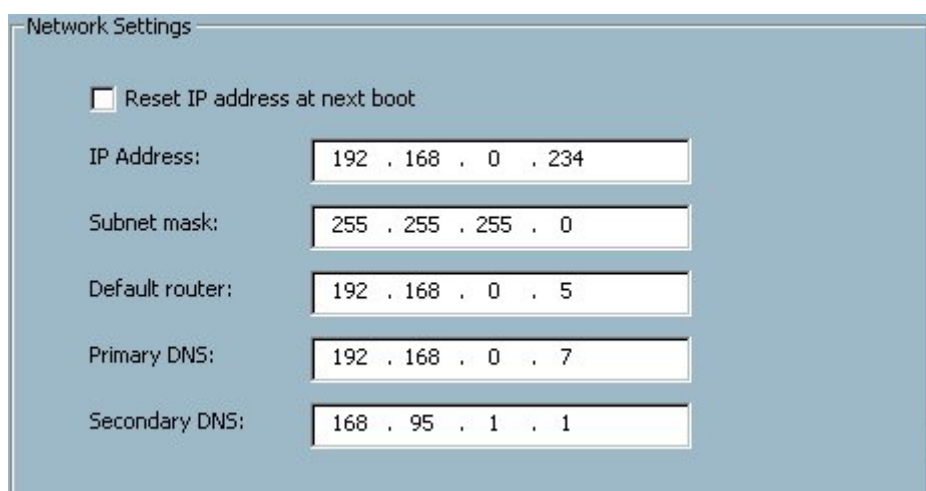
Figure 2-6 System setting

2.2.1.3 Adjust date and time

There are three ways to adjust system date and time. The easiest way is to make Network Camera "**Sync with computer time**". The second way "**Manual**" is to set the date and time manually by entering new values. Notice the format in the related field while typing. The third way "**Automatic**" is to make Network Camera automatically synchronize with timeservers over the Internet every hour.

2.2.2 Network Setting

In this page, you can change the server's IP address, subnet mask, default router, primary dns, and secondary dns. Please refer to Figure 2-7.



<input type="checkbox"/> Reset IP address at next boot	
IP Address:	192 . 168 . 0 . 234
Subnet mask:	255 . 255 . 255 . 0
Default router:	192 . 168 . 0 . 5
Primary DNS:	192 . 168 . 0 . 7
Secondary DNS:	168 . 95 . 1 . 1

Figure 2-7 Network Setting

2.2.2.1 Fix the IP address

Check "**Reset IP address at next boot**" will force Network Camera to reconfigure its IP address whenever it reboot. If you want the Network Camera to use a fixed IP, please uncheck the "**Reset IP address at next boot**" and assign a valid IP address. If you select more than one device, changing the IP address is not allowed and the IP address field will be disabled.

2.2.2.2 Basic Network Settings

You can setup the network setting by this page. Usually this is no need to be changed, if you do change it please make sure you input the correct setting or the device may not be reachable.

2.2.3 Wireless Setting (For wireless model only)

This page will show up only when you select the model with wireless support. It allows you to configure the setting for wireless. Please refer to Figure 2-8.

Wireless Settings

SSID: default723

Wireless mode: Infrastructure

Channel: 9

TX rate: 5.5 Mbps

Preamble: Long preamble

Data encryption

Change Encryption Key

Auth mode: Auto

Key length: 64 bits

Key format: HEX

1: 3333333333

2: 3434343434

3: 4444444444

4: 4545454545

Figure 2-8 Wireless Setting

2.2.3.1 Basic Settings

“**SSID**” (Service Set Identifier), it is a name that identifies a wireless network. Access Points and wireless clients attempting to connect to a specific WLAN (Wireless Local Area Network) must use the same SSID. The default setting is *default*. *Note: The maximum length of SSID is 32 single-byte characters and SSID can't be any of “, <, > and space character.*

“**Wireless mode**” Click on the pull-down menu to select from the following options:
“**Infrastructure**” Make the Network Camera connect to the WLAN via an Access Point. (The default setting)
“**Ad-Hoc**” Make the Network Camera connect directly to a host equipped with a wireless adapter in peer-to-peer mode.

“Channel” While in infrastructure mode, the channel is selected automatically to match the channel setting for the selected Access Point. In Ad-Hoc mode, the channel must be manually set to the same channel for each wireless adapter. The default channel setting depends on the installed region.

“TX rate” This field is for selecting the maximum transmission rate on the network. The default setting is “auto”, that is the Network Camera will try to connect to the other wireless device with highest transmitting rate.

“Preamble”, either **“Long preamble”** or **“Short preamble”** defines the length of the CRC block (Cyclic Redundancy Check is a common technique for detecting data transmission errors) for communication between the Access Point and the roaming wireless device. Long Preamble is the default setting. *Note: High network traffic areas should use the shorter preamble type.*

2.2.3.2 Data Encryption

“Data encryption” Check the box to enable the data encryption.

“Auth. Mode” Choose one of the following modes,

“Auto” – Will automatically decide the authentication mode of the wireless client.

“Shared” – allows communication only with other devices with identical WEP settings.

“Open” – communicates the key across the network.

“Key length” The administrator can select the key length among 64, 128 or 256 bits. The selection will depend on the selected device(s).

“Key format” Hexadecimal or ASCII.

“HEX” digits consist of the numbers 0~9 and the letters A-F.

“ASCII” is a code for representing English letters as numbers from 0-127 except “, <, > and space characters that are reserved.

“Network Key” Entering a key in either hexadecimal or ASCII format. When selecting different key length, acceptable input length is listed as following:
64 bits key length: 10 Hex digits or 5 characters.

128 bites key length: 26 Hex digits or 13 characters.

256 bits key length: 58 Hex digits or 29 characters.

Note: When 22(“), 3C(<) or 3E(>) are input in network key, the key format can't be changed to ASCII format.

2.2.4 Apply to selected device(s)

After configuring all the settings, the apply page will show up (see Figure 2-9).

Click on “**Apply**” button to apply the changes to the selected device(s) or click on “**Previous**” button to back to the previous page and modify the settings.

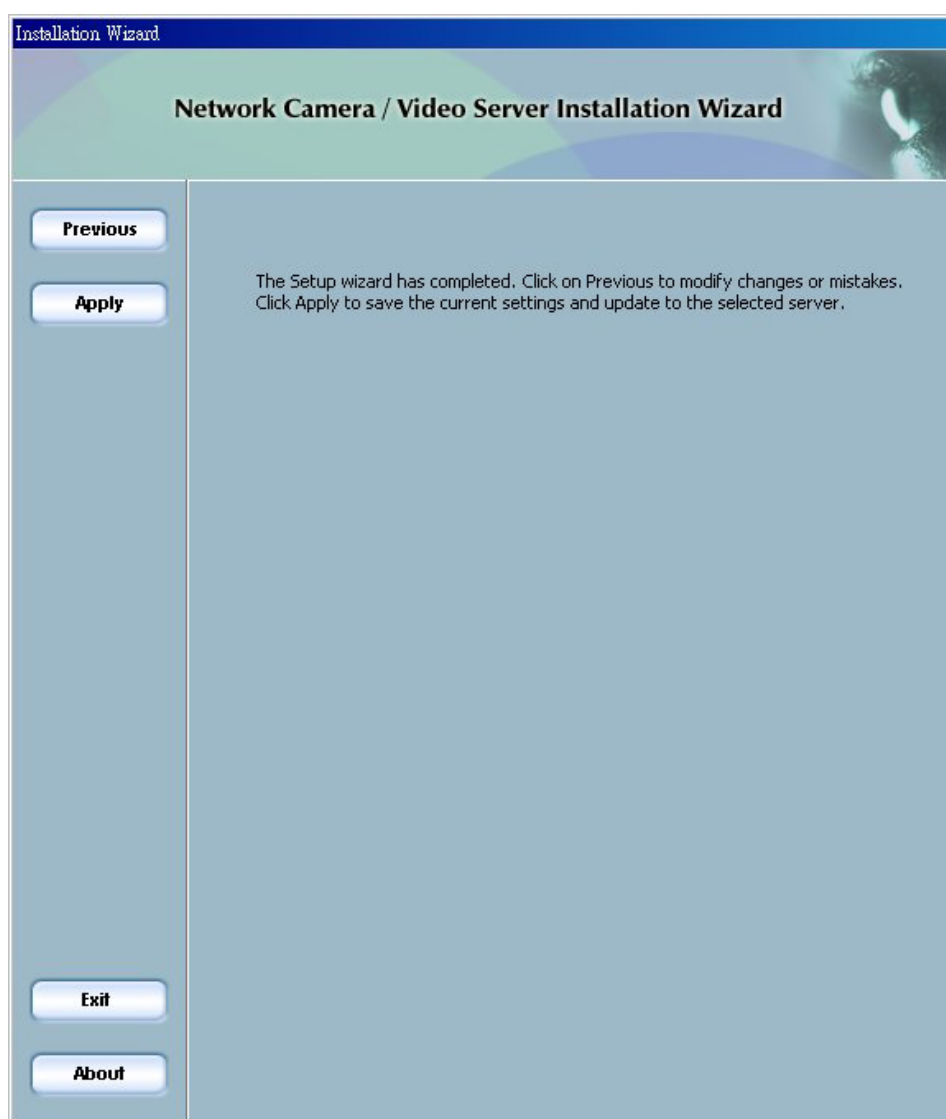


Figure 2-9 Apply page

2.3 Upgrade

When you select one device or multiple devices (of the same model), the “**Upgrade**” button will be enabled. Click on it to upgrade the firmware of the selected device(s). After click on the “**Upgrade**” button, Installation Wizard will try to connect the selected device(s). If the authentication is failed, it will popup a dialog (see Figure 2-10) to ask for the correct password and http port number.

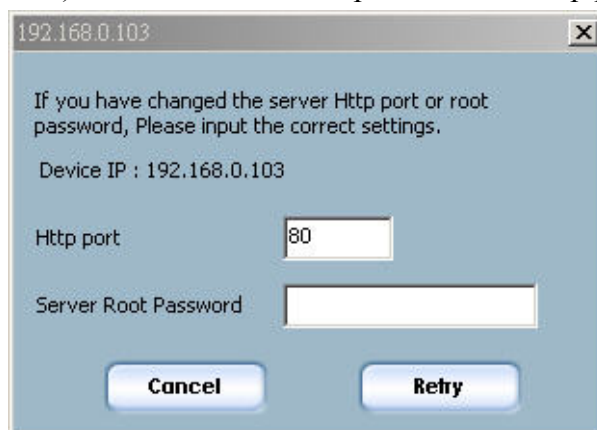


Figure 2-10 Authentication

2.3.1 Device Information

After connected to the selected device(s), it will display as shown in Figure 2-13. If you select more than one device, then the device info will show all the selected devices (see Figure 2-11). You can switch to the server info (see Figure 2-12) by clicking on the Tab control or double clicking on the device list.

Device Info			
	192.168.0.103	192.168.0.99	
Serial Number	Current IP Address	Assigned	Model
00-02-D1-14-03-D3	192.168.0.103	Yes	VS3102
00-02-D1-00-33-7A	192.168.0.99	Yes	VS3102

Figure 2-11 Device info

Device Info		
192.168.0.103		192.168.0.99
Name	Value	Status
MAC Address	00-02-D1-00-00-54	OK
Firmware version	IP2001-1A-VVTK-0200o	OK

Figure 2-12 Server Info

Installation Wizard

Network Camera / Video Server Installation Wizard

Previous

Upgrade

Device Info		
192.168.0.103		192.168.0.99
Name	Value	Status
MAC Address	00-02-D1-00-00-54	OK
Firmware version	IP2001-1A-VVTK-0200o	OK

Package Information

<input checked="" type="checkbox"/> Firmware version	N/A
Supported script version	N/A
<input checked="" type="checkbox"/> Web page version	N/A
Script version	N/A
Viewer plugin version	N/A
Upgrade plugin version	N/A
Supported language	N/A

Locate the firmware to upgrade

SYSTEM (C:) [v]

[-] C:

Selected package: _____

Exit

About

Figure 2-13 Upgrade page

2.3.2 Package Information

The package information will show the information about the file that you selected.

- **Firmware version:** The version number of the selected firmware.
- **Supported script version:** The maximum script version that firmware can support.
- **Web page version:** The version number of the web page.
- **Script version:** Script version used by web page and server script.
- **Viewer plugin version:** The version number of the viewer plugin.
- **Upgrade plugin version:** The version number of the upgrade plugin
- **Supported language:** The language that the selected file supports.

2.3.3 File Selection

You can use the file combolist to browse the file that you want upgrade onto the selected device(s). After selecting the file, Installation Wizard will check whether the file you selected is correct. If it is correct, then the package information will display the information about the file and enable the “**Upgrade**” button. Therefore you can click on the button to upgrade the firmware. If it is not correct, then it will popup a warning message.

2.3.4 Upgrade

Click on the “**Upgrade**” button to upgrade the firmware of the selected device(s). It will popup the dialog to show the progress of the upgrading process. (See Figure 2-14).

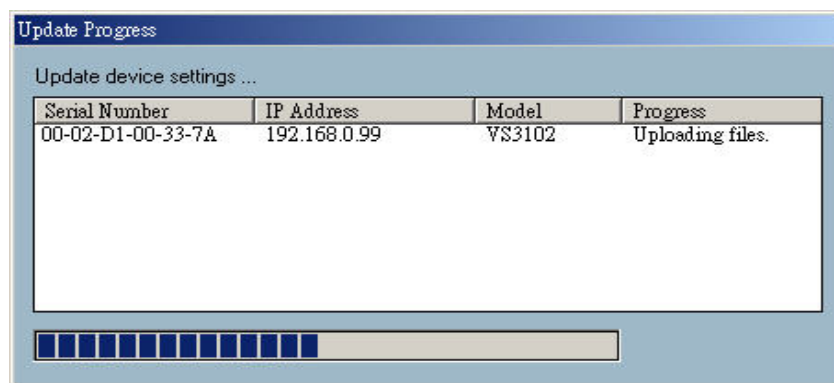


Figure 2-14 Update progress

After the upgrade process is done, you can see the dialog below (Figure 2-15). Click **“Done”** to finish.

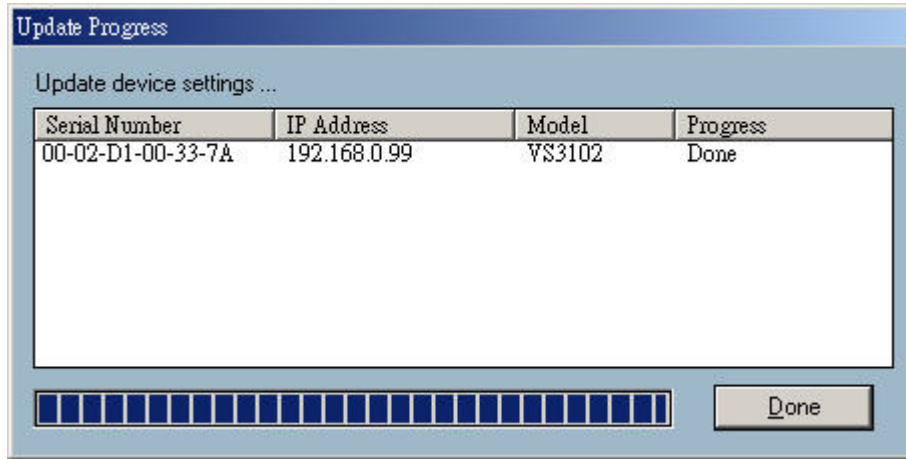


Figure 2-15 Upgrade Done